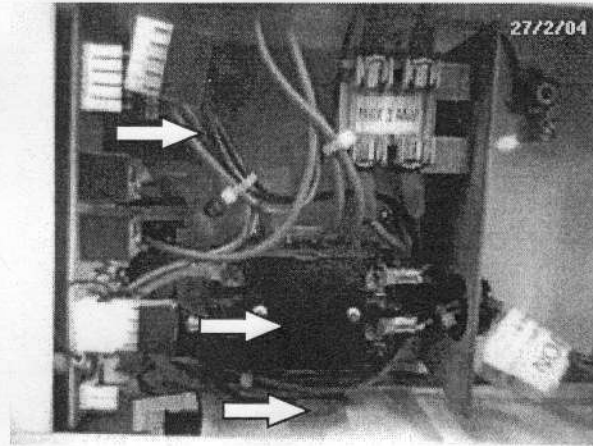
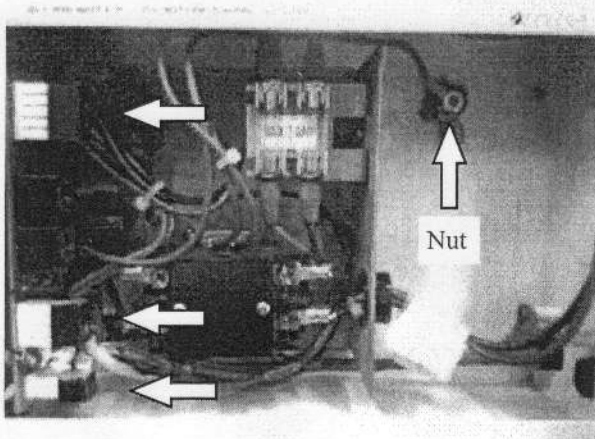
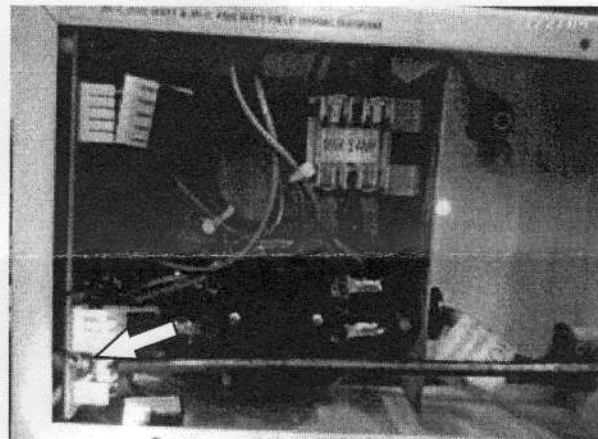
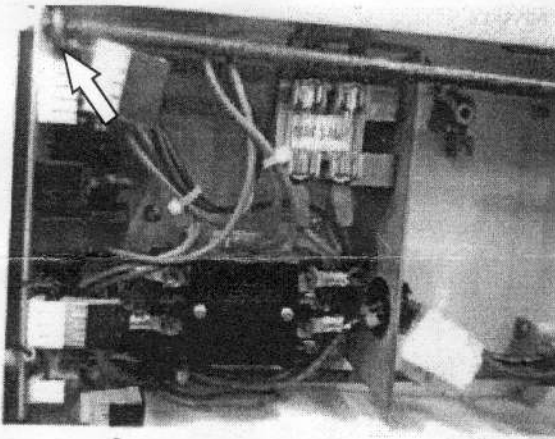


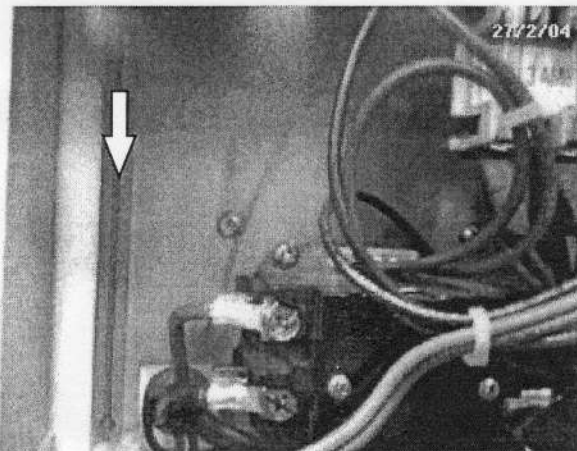
Installation Instructions for JR-1 & JR-2 Auto Drain Valve Circuit Board and Wiring



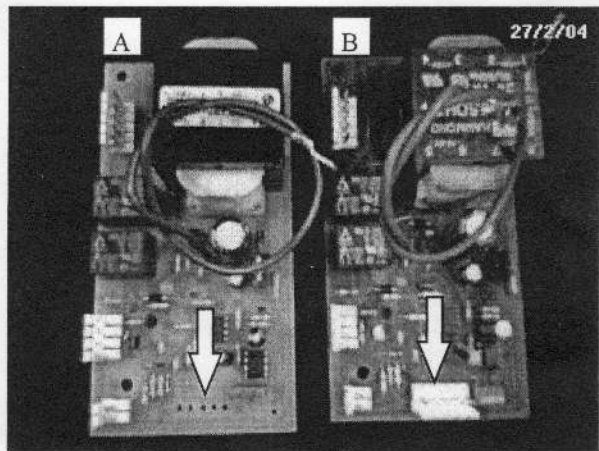
Step 1: With the power to the steam generator turned off, remove three plugs by pulling away from circuit board. Remove the ground wire from the grounding lug stud by undoing the nut.



Step 2: With a Robertson's screwdriver remove the two screws holding the circuit board.



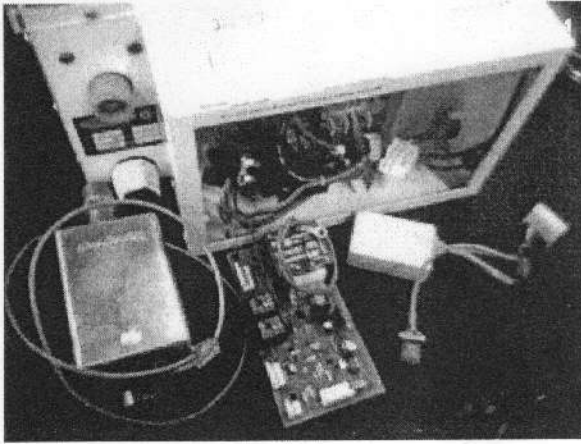
CAUTION: When inserting circuit board, it must be positioned in slot of card holder or electrical damage may occur.



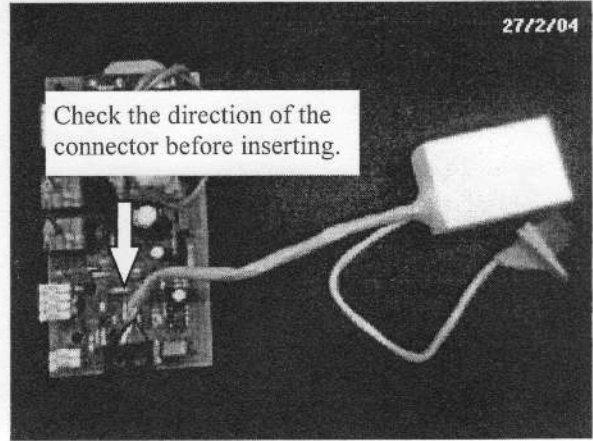
A: Circuit board without connector for drain.

B: Circuit board with connector for drain.

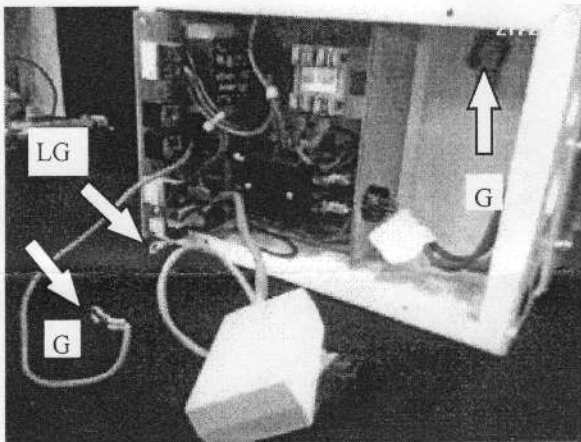
Installation Instructions for JR-1 & JR-2 Auto Drain Valve Circuit Board and Wiring



NOTE: These are all the parts needed to complete the drain valve installation.

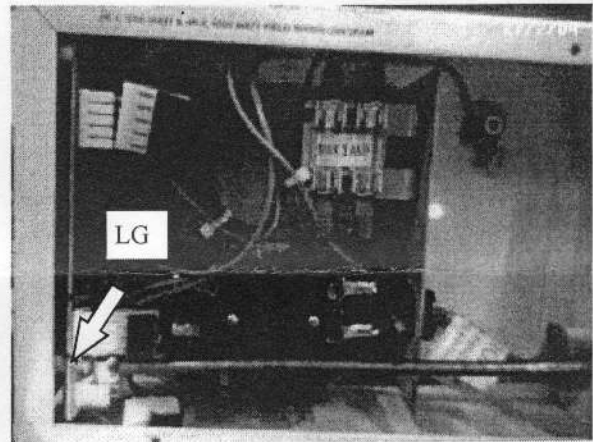


Step 3: Plug the connector from the drain module to the steam generator circuit board.



Step 4: Reconnect the plugs to the circuit board and slide the circuit board into the slot of the card-edge holder.

NOTE: Reconnect ground wires. ("G" = Ground)

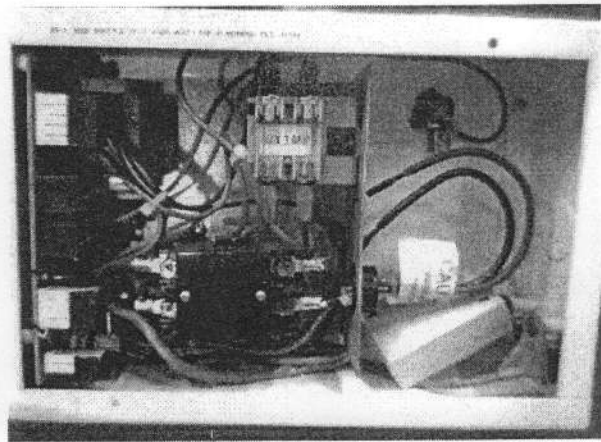


Step 5: With Robertson's screwdriver, insert and tighten the two bronze screws holding the circuit board.

NOTE: Ring terminal must go on the lower ground bronze screw to outside edge of PC board.



Step 6: With the screw provided, install green modular connector after removing plug.



Step 7: Insert white modular box into steam generator electrical box to complete the installation.